



Shipston Forum

The community newsletter for Shipston-on-Stour

January 2013

On behalf of all town councillors and staff, The Mayor, Fay Ivens, would like to wish everyone a Happy New Year!

Shipston proves a big hit with visitors

Over ninety per cent of visitors to Shipston feel satisfied with the welcome they receive, the atmosphere of the town and its overall appearance, according to results from a Visitor Survey conducted by Stratford District Council.

The research, conducted among 200 visitors to Shipston this summer, asked a range of questions to identify satisfaction with Shipston as a visitor destination, alongside two other market towns in the district, Alcester and Southam.

When asked to state their main reason for visiting the town, over a quarter (27%) cited general siteseeing/interest, with 22 per cent stating shopping or browsing.

Across the three surveys, Shipston scored the highest (75 per cent) in response to satisfaction with the range of shops available. Over 80 percent also expressed satisfaction with the range of places to eat and drink in the town.

Over nine in ten visitors felt safe from crime in Shipston and nearly ninety per cent were happy with the overall cleanliness of the town.

Although most scores are very high, satisfaction with some aspects of the town has fallen slightly since the survey was last undertaken. This will provide useful pointers for the town council, business community and local organisations when considering future plans for the town.

One visit to Shipston is likely to lead to another with 86 per cent of respondents saying they were either very likely or likely to recommend Shipston to someone else.

Mayor of Shipston, Fay Ivens, said "This research is a valuable insight into how Shipston is seen by visitors and we are grateful to the district council for providing this data. It is wonderful to see Shipston scoring such high satisfaction ratings and we look forward to building on those in the future."



Town Council freezes precept for third year running

Shipston Town Council has unanimously agreed to freeze the precept for the third year running, resulting in a small reduction in costs to householders.

Following careful financial management in recent years, and detailed discussions about likely expenditure for 2013/14, the town council has set its budget at £206,000. With the recent increase in the number of homes in the town, all residents will benefit from a modest reduction in the town council element of the 2013/14 Council Tax.

Despite the precept being the same as last year, the town council has also been able to significantly increase its annual community grant budget (see page 2 for details of award recipients). This has been made possible through the savings made in reducing the council's operating costs, while continuing to provide a high level of service to residents.

Interested in Shipston's Neighbourhood Plan? Turn to the centre for your four page guide

Fabulous festive season launched at Shipston Victorian Evening

Shipston Town Centre was packed as residents and visitors flocked to the 2012 Victorian Evening. For details see page 4.



Photo courtesy of Philip Vial

Mayor's column



I was invited by Shipston Flower Club to their annual Gala Evening when the very imaginative Nigel Whyles created stunning floral displays to accompany Music from the Shows.

I attended the High School Awards Evening where it was wonderful to witness the high success rate that the students achieved in the 2012 GCSE exams. It is always so evident that all students are encouraged by the dedicated teaching staff to strive to reach their highest potential.

We were invited to the Norgren Bowls Club Presentation Evening when, after a delicious meal, I was honoured to present some of the trophies. The evening highlighted to me just how much local talent we have at the Bowls Club.

On the day of the Civic Service, the River Stour burst its banks again. After warning Rev Jill Tucker of the possible postponement of the service due to flooding, I donned my high vis emergency gear and started directing traffic. I was amazed when the Bishop of Warwick drew up a few hours later. I realised the service was going ahead and I had to attend my special service in my bright orange jacket!

I was delighted that so many townspeople joined me for coffee and mince pies at New Clark House on December 7th which I hope will become an annual event in the Civic diary.

It was great to be invited onto the stage by The Rotary Club of Shipston along with special guests and other dignitaries for the switching on of the lights for the Tree of Life and the Town Centre. This is always such a special evening when I believe our town is transformed into a magical storybook setting.

We were delighted to be invited to another wonderful Christmas Concert performed by the Stour Singers conducted by Richard Emms - a performance worthy of the Royal Albert Hall. The Shipston Town Band Christmas Concert was another extravaganza of musical delights, readings and singing... a wonderful finale to their Centenary Year.

Fay Ivens

Community groups benefit from increase in town council grants

Shipston Town Council is delighted to be able to award £19,800 in grants to community groups and charities during the 2013/14 financial year.

This represents a major increase in the amount awarded in previous years, coming at a time when the economic climate is putting many community groups under increasing pressure.

The groups awarded grants are as follows:

Shipston in Bloom
Shipston Music Society
Stroke Support Group
Shipston Town Band
Shipston Proms
Townsend Hall Management Committee
Shipston First Responders

Shipston Community Arts Youth Club
Friends of Shipston Primary School
Drugs Action Shipston
VASA
Citizens Advice Bureau
St Edmund's Food Bank

A general youth support fund of £5,000 has also been set aside.

Mayor, Fay Ivens, said "we are really pleased to be able to support these worthwhile organisations without raising our precept for next year."

Local Poppy Appeal raises over £12,000!

During the two week Poppy Appeal in late October/early November 2012, a magnificent total of £12,340 was raised in Shipston and surrounding areas. The funds raised will support ex servicemen and women and their dependants.

Richard Adams, chairman of the Shipston branch of the British Legion, said "we are extremely grateful to the people of Brailes, Sutton-under-Brailes, Winderton, Cherington, Stourton, Stretton-on-Fosse, Barcheston, Willington, Burmington and Tidmington for their ongoing generosity in these tough economic times.

"Our volunteer collectors do a fantastic job of raising money in the local area and I would like to thank them all for giving up their time to this important cause" Richard added.

Members of the Shipston Branch of the Royal British Legion led a well-supported Remembrance Parade and service on 11th November 2012 in memory of the fallen. For full details, see page 13.



The Shipston Hat goes global!

Two enthusiastic knitters in Shipston have ensured a little piece of Shipston has made it as far afield as Australia.

Using the Shipston Hat pattern, made for the first time at the Shipston Wool Fair in 2011, Christine Sturgess from Horsefair knitted six hats for her granddaughters and their friends. They have proved very popular and are being worn up and down this country as well as in Oz.

Christine's efforts inspired neighbour, Shirley Crimp (pictured), to embark on a festive knitting spree, generating five hats in different colours for Christmas presents. With all the wool used bought from local shops, Christine and Shirley are doing their bit to put Shipston on the map, as well as providing the hat recipients with a stylish way to keep their heads warm!



December's hot topics

Playground plea: Councillors and members of the public were treated to an impressive presentation from three members of Shipston Primary School's School Council. The children were building awareness of their efforts to raise funds for school projects and other charities, particularly their adventure playground project to provide interesting and challenging play equipment for all ages at the school.

Sheep street changes: Warwickshire County Council (WCC) highways department is due to begin work on the pathways in Sheep Street in January.

Victorian Evening: Melanie Trapp led the congratulations to Shipston Rotary on a successful event with a wonderful atmosphere.

Lie-in reinstated: The Town Clerk will ensure that the outdoor hoovers continue to only be used after 7am in the town centre.

Bus stop nuisance: Roy Munden raised concerns about the state of the bus shelter on Stratford Road due to litter and vandalism. General Purposes Group will review the future of the shelter.

Speeding: Concerns were raised about speeding on Mayo Road en route to the nursery and rugby club. This will be raised when WCC's road safety officer attends a General Purposes Group meeting.

Campaigning for Shipston

Flood management: Ronnie Murphy led praise for the Mayor, Arthur Ivens and Adrian Jelf, together with Lawns2Mow, for their efforts in alerting residents and businesses to possible flooding, directing traffic away from affected areas and distributing sandbags to affected properties. Brian Healey was also thanked for his work researching flooding issues at the allotments.

Fundraising: Fay Ivens thanked all those who attended the coffee morning and supported the Mayor's tombola stall at the Victorian Evening, raising money to support the Mayor's charities.

Planning: The town council will request that the issue of drainage from the caravan site on the Darlingscote Road is looked into as part of the formal planning application for the site. The council will not be making any representation on the application but criticised the district council for not having a policy on traveller sites. Alan Noyce noted that there had been no problems from the site since it was established.

Hornsby Close confusion: Town and district councillors expressed surprise and concern at SDC's decision not to fight the appeal against the planning decision not to build on land at Hornsby Close. The appeal will be heard on the 18th December.

Town Council business

Neighbourhood Plan: The steering group is now meeting regularly. A four page guide to the Neighbourhood Plan is included in this month's Forum.

New councillor: Town councillors welcomed Jeff Kenner as the new district councillor and congratulated him on his successful campaign.

CCTV funding: Councillors heard a presentation by the operators of local CCTV about how it is used and the differences between 24/7 live monitoring and recorded surveillance.

Playground drainage: STC will obtain maps of the drainage around the Libbylous playground from Severn Trent in an attempt to rectify the flooding issues.

Dog bin increase: Two new dog bins will be installed on Railway Crescent and Stour Court.

Precept: The precept was formally accepted (see page 1 for details).

New Clark House Update



Protect our verges!

Unfortunately, a number of grass verges in the town are being ruined by vehicles parking on them. This causes large ruts to form – particularly when the ground is soft – making the verges unsightly and difficult to mow.

Please avoid parking on grass verges.

Flood response

On 21st November, we were alerted to the strong possibility of flooding. Councillors Arthur and Fay Ivens visited residents in Church Street and Mill Street to encourage them to prepare their flood defences while I visited shops in the town centre to encourage staff to move cars from the Mill Street car park.

Our contractors distributed hundreds of sandbags and as roads became impassable, they worked with councillors to direct traffic away from affected areas.

Before the weekend, leaflets were distributed to all residents and businesses in Mill Street and Church Street with the out of hours mobile numbers for the Mayor and our contractors and myself as a reassurance in case of emergency.

On the day of the Civic Service (Sunday 25th), the River Stour burst its banks again. The Mayor started directing traffic alongside fellow councillors and contractors.

On behalf of the Mayor and emergency planning team, I would like to congratulate our town contractor, Dave Faulkner and his team, for the professional way they dealt with the situation and the help and the reassurances they gave to both residents and motorists.

To sign up for flood alerts, please call the Floodline on 0845 9881188

Georgina Beaumont:

Town Clerk
01608 662180
e: clerk@shipstononline.org

Victorious Victorian Evening lights up the Town Centre

Shipston was bathed in festive glory at the switching on of the Christmas lights and Tree of Life at the annual Rotary Victorian Evening in December.

Firmly established as one of Shipston's most popular annual spectacles, the 2012 event managed to exceed expectation with not one, but two celebrity guests, a variety of entertainment and a fantastic selection of stalls.

Paralympic gold medallist, James Roe, and torchbearer, Camilla Hadland took great pleasure in switching on the Tree of Life, while Mayor, Fay Ivens, led the countdown to the Christmas Lights.

Many shops in the town took part in the window competition, with Richard Harvey winning thanks to their live Queen Victoria stealing the show. Rightons butchers were second with Katharine House Hospice coming third.

Father Christmas delighted visitors to his new grotto, with his dancing polar bear proving extremely popular.

Colin Black, President of Shipston Rotary, said "I would like to thank everyone who helped make this event so successful. The quality of stalls was better than ever and we

look forward to welcoming stallholders back next year."

"We were delighted to see so many people joining in the fun and helping us raise valuable funds for local, national and international charities," Colin added.



Pictured (from left: James Roe, Fay Ivens, Colin Black, Marion Lowe and Camilla Hadland. Photo courtesy of Philip Vial

All smiles at the Mayor's Gala Evening

Over ninety people had a ball at the Mayor's Charity Gala Evening on the 15th December 2012, in aid of Shipston First Responders and Shipston Youth Club. The event raised £590 which will be divided between the two charities.

The gala dinner took place in the Townsend Hall, made to feel extra special due to the indoor marquee and Christmas lights which gave an added festive feel. Shipston residents were joined by dignitaries from all over Warwickshire and north Oxfordshire as everyone came together for a pre-Christmas celebration.

Grace was said by Councillor Reverend Neville Beamer, before guests tucked into a delicious three course meal. Thanks to the efforts of the wonderful Milwaukee Gold band, everyone was then able to work off their dinner with dancing till late.

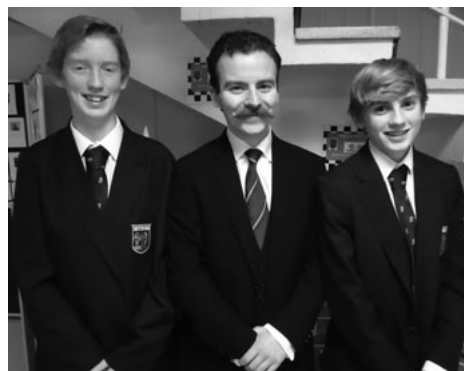
Mayor, Fay Ivens, said "I am delighted so many people were able to join us in this festive celebration in aid of my two charities. It was a truly fabulous evening. I would particularly like to thank Georgina Beaumont and Liz Jaworska for all their hard work in organising and promoting the event."



Fay Ivens (centre) with organising team, Liz (left) and Georgina. Photo by Philip Vial.

Bloodhound Engineer presents High School Awards

Top British rocket engineer and one of the designers of the Bloodhound land-speed record-breaking attempt, Daniel Jubb, was a Guest of Honour at



Shipston High School's Awards Evening on 15th November. He was joined by two other special guests of honour, Harriet and Sophie Taylor, both of whom are previous students at the school and have just achieved first-class honours degrees at University.

Between them they presented over a hundred and twenty awards to students of the school as well as to last year's leavers. During the Awards Evening which was attended by many distinguished guests, the school celebrated an outstandingly successful year, including its students' achievements in the 2012 examinations.

Headteacher, Jonathan Baker, said, 'Each of our three Guests of Honour helped to make it a very memorable evening. Particularly pleasing was to have so many leavers coming back to join us and hearing how well they are all doing since they have moved on to sixth form or to college.'

Regular events:

- Mon Citizens Advice Bureau:** Mornings, New Clark House. To book a free appointment, call 01789 200136
- Mon** (from January 14 onwards) **Little Kickers:** Fun for Toddlers with soft footballs. Townsend Hall. 10.10am - 10.55am, Little Kicks 18 months - 2 years 3 months. 11.05am - 11.50am Junior Kickers 2 years - 3.5 years. Contact Helen Johnson - Tel 01869 323186 or hjohnson@littlekickers.co.uk
- Mon Zumba:** 7:45pm Shipston High School. £5. Other weekly classes also available. Contact: Debbie 07966 746794
- Tues Stroke Club:** Alternate Tuesdays (8, 22). 10am-12pm Room No 2, Ellen Badger Hospital.
- Tues Rhyme time for under 2s:** Alternate Tuesdays (15th and 29th). 10:45am Shipston Library. Free. Contact: 661255
- Tues Age Concern Lunch Club** at Stour Court. Contact: Stella, 686224
- Tues Bingo:** Alternate Tuesdays (15, 22). Doors open at 6.30pm. Eyes down at 7.30pm. Sheldon Bosley Hub. Contact: 661886
- Tues Shipston on Stour Rotarians:** Halford Bridge Hotel, 7.30pm. Contact Adrian Ramskill 0797 656 6525.
- Weds St John's Ambulance:** Adults division. Meet at Shipston Fire Station, 7pm. Contact: Josie Bayliss, 684834
- Weds** (from January 16 onwards) **Tai Chi:** Gentle tai chi exercise classes every Wednesday, 12.30-1.30pm. Townsend Hall, £5 each week. Suitable for all levels of health & fitness. Contact Debbie Wild, Swan School of Tai Chi 07773 318830 or email debbie@swantaichi.co.uk
- Thur Age Concern Lunch Club** at Rainbow Fields Contact: Diana 01789 740627
- Thur Age Concern gentle exercise and relaxation class:** 2:15-3:13pm, Rainbow Fields. Contact Leigh, 665995
- Fri Walks over fields with friendly group.** Leaves Old Mill car park at 10am. Contact: Marlene, 663616
- Fri Bridge** 10.15am – 12.15pm Catholic Church Hall, Darlingscote Road. Contact Val Young on 01608 238754 or 07516 091786
- Fri Shipston Probus:** alternate Fridays (11, 25)
- Fri Age Concern Lunch Club** at Stour Court. Contact: Linda, 662290

There are lots of regular classes on at the Townsend Hall. They include: line dancing, badminton, short tennis, yoga, ballet, Calypso kids music, Zumba, modern jazz dancing and circuit training. For more details, visit www.townsendhall.com or call Lisa Bryan on 07800 771368.

January Diary

- 2 National Organisation of the Widowed:** Lunch. 12pm. Contact: Barbara Bean 663230
- Shipston-on-Stour Women's Institute:** Strangler at the Door by Janet Jarvis. 7pm, Catholic Church Hall, Darlingscote Road. Contact: Jane Hanks 664519
- 3 Story Stomp:** Storytelling for 2-5 year olds. 10.30am, Shipston Library. Free. Contact: 661255
- 4 Shipston Dementia Resource and Support Cafe:** 2pm-3.30pm, Stour Court, Old Road. Wendy Harkness from the Alzheimers Society. Contact: Barbara Smith 662433
- 5 Shipston Town Council Monthly Litter Pick:** All welcome. Meet at New Clark House, West Street at 10am. Equipment and refreshments provided. Contact: Fay Ivens 662133 or fayivens@aol.com
- 7 Stour Valley Visually Impaired Group:** 'Warwickshire Murders', by

- Bill Hannis. 2pm, Stour Court. Contact: Shirley Pilkington 662684
- 8 Senior Citizens Action Network meeting (SCAN):** 10-11.30am, Townsend Hall. Free admission, all young-at-heart over 50s welcome. Contact: Jane Pearce on 01608 663491
- Stour Valley Lions Monthly Meeting:** 8 pm, The George Hotel, Shipston. All Welcome.
- 9 Stour Valley Lions Book Sale:** 10am-4pm, The Coach House, Church Street, Shipston (opposite the Library). Books include fiction, children's, cookery, gardening, art etc. To donate books contact Lion David Squires on pinnegards@tiscali.co.uk
- 10 Royal British Legion – Shipston Branch:** Committee Meeting. 7.30pm, New Clark House, West Street. Contact: Mike Dobbin 664636
- 11 Stour Valley Lions Book Sale:** 9am-4pm. Details as above
- Stour Valley Lions Rural Cinema presents 'Anna Karenina'.** For details see ad on page 6
- 12 Stour Valley Lions Book Sale:** 9am-2pm. Details as above
- Mayor's surgery:** The Mayor will be on the High Street from 10am ready to discuss any queries or requests from local residents.
- Shipston Home Nursing:** Zumbathon. 10.00am to 1pm, Sheldon Bosley Hub, Shipston. £8 per entry. Hosted by Debbie Birch and Rachel Tame.
- 14 Shipston Town Council Monthly Meeting:** 7pm, New Clark House. All welcome. Contact: Georgina Beaumont 662180
- 15 Shipston Arts and Crafts Society:** 'Picasso's Women' by Margaret-Louise O'Keefe. 7.30pm, Catholic Church Hall. Contact: Penny Law 663871
- 16 National Organisation of the Widowed:** Meeting. 10.30am - 12pm, Coach and Horses. Contact: Barbara Bean 663230
- 18 Shipston Music Society:** Monthly meeting, 7.30pm, Shipston Methodist Church. Contact: 663207
- 19 Shipston Home Nursing:** Health and Complimentary Therapies Day, Burmington House, Burmington, CV36 5AF. Therapists available 10am-4pm; Author talk and reading/book signing with champagne and canapés 6pm onwards. £20 per ticket. Contact 07769 654445, 01608 664972 or visit www.soulstreamarts.com
- 21 Stour Valley Visually Impaired Group:** 'Sleeping with the London Fire Brigade' by Anita Bronson. 2pm, Stour Court. Contact: Shirley Pilkington 662684
- 23 Stour Valley Lions Book Sale:** 10am-4pm. Details as above
- 25 Stour Valley Lions Book Sale:** 9am-4pm. Details as above
- Chamber of Commerce Business Advice Surgeries:** Free advice sessions by appointment at Stour Enterprise Centre, Astech Mill, Stratford Road. To book, call 629693
- 26 Stour Valley Lions Book Sale:** 9am-2pm. Details as above
- 27 Shipston Home Nursing:** Dinner at Cotswold House Hotel with Greg Wallace, Cotswold House Hotel. 7 for 7.30pm. £75.00 includes £10 donation to SHN. For information please download the programme from <http://www.thebite.co/>
- 30 Shipston & District Literary Society:** 7.30pm, The George Hotel. Contact: Mary Edwards 01789 450737 or Malcolm Pollard 663482
- 31 – 2nd Shipston Amateur Dramatic Society presents 'The Sleeping Beauty' Pantomime.** For details, see ad on page 16

STOP PRESS!

New Street Car Park will be closed from 4th February for 20 weeks to enable the safe demolition and rebuilding of the Scout Hut. Further details will be published in the February Forum.



STOUR VALLEY LIONS **BOOK SHOP**



**Now open on Wednesdays,
10am-4pm**

For full details of opening hours, see the What's On diary.

**January focus:
Transport through the ages**

**Venue: The Coach House, Church Street,
Shipston on Stour**

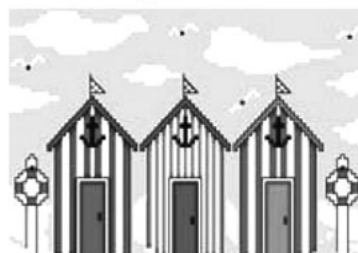
(opposite the Shipston Library, adjacent to the White Bear Car Park)

**Huge selection of fiction, non-fiction and children's books.
All proceeds to local charities.**

Books in GOOD condition are always gratefully accepted,
contact as below, we regret we can't accept books at the Coach House.

New Members always welcome, contact Lion David Squires,
e.mail pinnegards@tiscali.co.uk

Why not join us for a mid-winter
Holiday at Home



for the over 65s ?

activities, games, quizzes & entertainment

**Townsend Hall Shipston on Stour
Tuesday February 12th
10.00am to 3.00pm**

Costs £5 for the day, including lunch &
refreshments.

To reserve your place contact Rosemary on
01608 662584

**Shipston on Stour and
District Twinning association**

QUIZ EVENING

Friday 1st February 2013

at Catholic Church Hall

Darlingscote Road

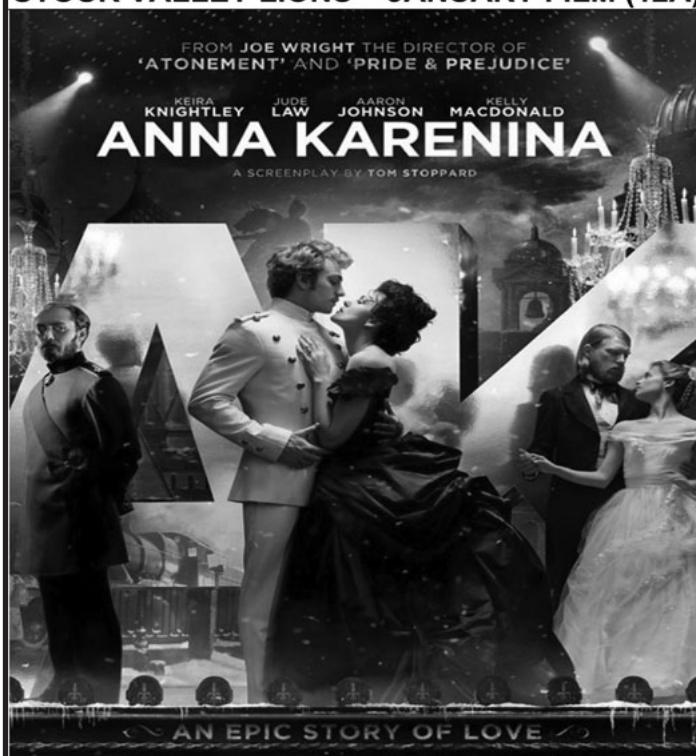
Shipston on Stour

Commencing at 7.30pm

Teams of up to 4 cost £7.50 per adult
includes ploughmans supper

Bring Your Own Drink

STOUR VALLEY LIONS – JANUARY FILM (12A)



**SHIPSTON HIGH SCHOOL
Friday 11th JANUARY, 2013 at 7:00 pm
Advance Tickets £3.50 (£4 on door)**

From: R. Clarke Electrical, 27 High Street, Shipston On Stour.
Or Lion Judith Jackson. Tel: 01608-661148
Raffle and Refreshments



SHIPSTON ON STOUR NEIGHBOURHOOD PLAN



What is a Neighbourhood Plan?

A Neighbourhood Plan provides a great opportunity for individuals and organisations within our community to have more influence over how the place in which we live and/or work will change over time.

At the moment, most planning decisions are taken at district council level and local input from Shipston is limited. By preparing a Neighbourhood Plan, residents can have their say on the important issues facing the town, and come up with their own proposals for the type and location of development, infrastructure and local services they think we need.

Once adopted, a Neighbourhood Plan has to be taken into consideration when district councils or other authorities make planning decisions.

The story so far

Shipston Town Council held a launch event in October 2012 to promote the NP project and find out whether residents supported the idea of producing a plan. Initial views on the key issues which the NP should address were also sought. Approximately 80 people attended and there was strong support to proceed with a plan. The town council has since formally agreed to proceed with a Neighbourhood Plan for Shipston.

One of the council's key priorities in moving the plan forward is to encourage as much input from the local community as possible so that all residents can have their say and a broader range of interests can be represented in the final plan document.

A dedicated website has been set up – www.shipstonnp.org – where you can find out more about the NP process and volunteer to get involved. The scoping document, available from the website, gives more detail about the process and next steps.



“The starring role in an effective Neighbourhood Plan is the local community”

What are the big issues to address?

Based on the feedback received to date via the NP launch event and the NP feedback forms, the following big issues have been identified:

- The need for a stronger local economy with more local employment opportunities
- Whether or not significant additional housing is a good thing, with greater provision of affordable housing
- Improved infrastructure, particularly traffic management, parking and effective flood defences
- Sustaining and conserving the vitality, usefulness, and heritage value of the town centre
- Better social and welfare facilities, including healthcare, schools, youth facilities, and meeting the needs of an ageing population
- An improved environment, specifically availability of and access to recreational and public open space
- Making the town more suited to local needs and ensuring those changes are sustainable.

More issues may well be added to the list as more feedback is received and the NP process progresses.

Not yet had your say on the issues?

This is just the start of the process. Although work is beginning now to set up task groups to look at the big issues, you can still suggest new ideas.

Simply fill in the questionnaire later in this leaflet and return to New Clark House. Alternatively, you can email us at np@shipstononline.org



For the latest on the Neighbourhood Plan, visit www.shipstonnp.org

What will it cost?

The likely costs will become clearer as the project progresses. Thanks to a combination of support from the Department for Communities and Local Government (DCLG) and Shipston Town Council, technical assistance from the district council and the valuable volunteer time from the local community, a reasonable budget is in place to cover the essential work.

Effective engagement with the community is essential if the plan is to meet the strict national criteria and be adopted. If you have any ideas or would like to support the project, please contact the Town Clerk.



Who is running the project?

Shipston Town Council is responsible for funding the Neighbourhood Plan and ensuring the process proceeds effectively. In particular, the STC Steering Group will provide direction and ensure quality and independence is achieved, particularly in relation to engagement with the community.

The town council has appointed town planner and regeneration specialist, Stephen Miles, to oversee the project on a voluntary basis. Stephen will chair the steering group, which is made up of the following councillors:

Ian Cooper – Finance Working Group
Adrian Jelf – Planning Working Group
Richard Cheney – District councillor

The Steering Group has the discretion to appoint up to two additional representatives, if needed, as the plan develops.

The planning context

Neighbourhood Plans have to fit in with 'top down' planning policy documents – the National Planning Policy Framework and Stratford District Council's Local Development Framework, incorporating the Core Strategy.

The process is quite formal, with a series of 'tests' performed during the plan-making to ensure EU Directives and legislation is complied with. However, the town council believes the outcome, once the Neighbourhood Plan has been adopted, will be very worthwhile.

Importantly, the plan will influence thinking and decisions on emerging proposals and future planning applications and will form the Shipston's contribution to the Local Development Framework.

Does that mean we can leave the town council to get on with it?

No! The starring role in an effective Neighbourhood Plan is the local community – you, your friends, local businesses, community groups, health service providers, charities, schools, etc.

It is crucially important for Shipston residents and businesses to get involved in this project. The government is keen to encourage more direct community involvement in planning matters through its Localism Bill. Leaving the town council to develop a Neighbourhood Plan would miss the point – it should be about how the local community as a whole thinks Shipston should develop.



Some useful feedback from the public has already been received, but we want to hear from the widest group possible, so that views of all ages and interest groups can be considered. You can read more about how to get involved on page 11.

At the end of the process, the NP will be put to a local referendum. If the community gets involved early to shape the content of the plan, it's much more likely that the plan will get adopted and Shipston can have a greater say in its own future.

**This is your Neighbourhood
Plan - be a part of it!**

Preparing a Neighbourhood Plan

To make sure our plan meets the required criteria and is judged as 'sound' there are various steps in the process which we have to go through as illustrated in the diagram opposite.

NP process is likely to take between 12-15 months to complete.

Opportunities and limitations

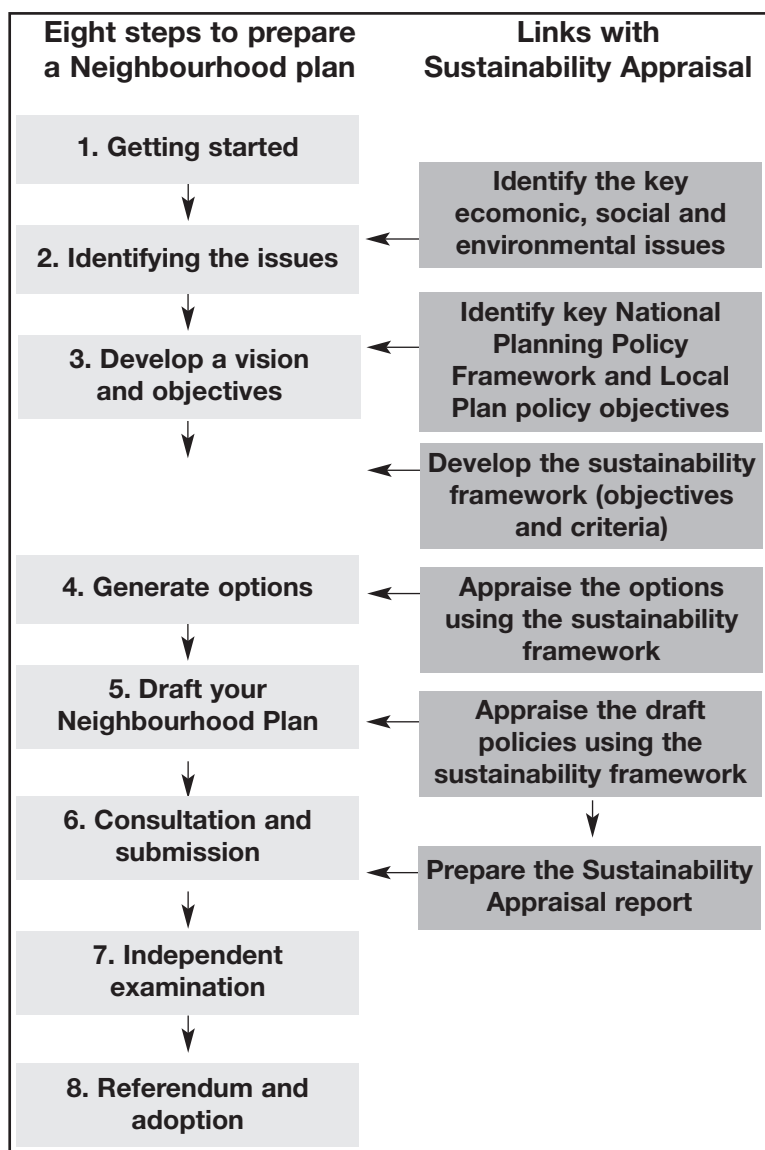
A neighbourhood plan can:

- Decide where and what type of development should happen
- Promote more development than is set out in the Local Plan (see planning context)
- Include policies, such as design standards that take precedence over existing policies in the Local Plan for the neighbourhood (provided they do not conflict with the strategic policies in the Local Plan)

A neighbourhood plan cannot:

- Conflict with the strategic policies in the Local Plan prepared by Stratford District Council
- Be used to prevent development that is included in the Local Plan
- Be prepared by a body other than a parish or town council, or a neighbourhood forum

(Taken from 'How to shape where you live' by the CPRE/NALC)



Questionnaire

1 Do you:

☐ Live in Shipston (please provide post code): _____ ☐ Work in Shipston ☐ Neither

2 Thinking about the next 10- 15 years, please list what you consider to be the 'big' and 'small' issues for Shipston, and whether you think these are particularly important, or less so.

	Big Issues	Smaller issues
Most Important		
Less important		

3. Is there anything else that you would like to add?

Please return your feedback form to New Clark House (see page 15 for details)

Shipston's Neighbourhood Plan: Special Feature

Engaging with Shipston's community

The steering group is developing a community engagement plan designed to ensure there are lots of opportunities to get involved. Working groups made up of volunteers are likely to be formed around each of the big issues and more questionnaires are likely as the plan starts to take shape.

As part of the engagement plan, the schools, Youth Club, local churches and other organisations will be approached to enlist their help in engaging as many people in the NP as possible. We want to make this process as fun and engaging as possible, so that Shipston's Neighbourhood Plan is genuinely owned and supported by our local community.

How can I get involved?

So far, about 20 people have offered to get involved, which is a great start, but we're keen to increase that number. If you have some time to spare and would like to get involved in working groups or other activities supporting the plan, please contact the Town Clerk on 01608 662190 or clerk@shipstononline.org

If your time is tight, you can still get involved by sharing your views. Please fill out the feedback form on page 9 or send an online response via www.shipstonnp.co.uk.

For brief updates and reminders for NP events, follow us on Twitter: @ShipstonNP

Regular updates will also be included in the Shipston Forum, including news of future consultation and feedback on responses received to date.



Next steps:

The immediate next steps for Shipston's Neighbourhood Plan are:

- Formally advertising the intention to proceed with a Neighbourhood Plan via the District Council
- Working with the community to finalise the list of big issues
- Identifying and recruiting volunteers for working groups to start looking into the big issues
- Finalising the project plan and programme
- Starting work on the information and plan-making tools needed to support the community as it begins work on developing Shipston's first Neighbourhood Plan.



Want to know more?

Booklets explaining the NP process are available from the Town Council offices and can be downloaded from www.shipstonnp.org.

Further materials, including background information, steering group minutes and general updates can also be found on the website or requested from New Clark House.



For more information visit – www.shipstonnp.org

Shipston Primary School

Shipston On Stour Primary School



Spotlight on Science

Shipston Primary has gained national recognition for the way it teaches Science in school.

Shipston and its school Federation partner Acorns in Long Compton have been awarded the Primary Science Quality Mark (PSQM).



Both schools achieved Silver Awards following a year of hard work focusing on teaching and learning approaches, pupil engagement and partnerships with external organisations including the Science Learning Centre East of England.

Science Assemblies, a Big Bang Fair and a Hogwarts inspired 'Potion Lab' were just some of the exciting and innovative events held in school.

Reviewers commended Shipston on its approach saying: "Science at Shipston looks to be varied, exciting and hugely enjoyable."

Science Leader for Shipston Primary, Julia Wallace, said: "Receiving this award means that all the hard work and dedicated science learning opportunities that the teachers have created for our children are being recognised nationally. Through a wide range of activities, we have demonstrated our commitment to science and its profile has been greatly raised across both schools."

Meet the Mayor

Year 6 pupils from Shipston Primary had their first meeting with our Mayor, Councillor Fay Ivens, as part of a new initiative to give children a stronger voice in the town.

Fay Ivens took the opportunity to explain the background to her role and also the history of mayors in Shipston.

The children were interested in the chains of office and even got to try the gavel hammer which is usually used to call order in meetings.

Children expressed their opinions on what they felt was good about Shipston, including the allotments, general cleanliness of the town, the mixture of old and new houses, flowers and the range of independent shops.

For areas of improvement they discussed safer places to cross on the London Road and Stratford Road, a park on every estate and more sports pitches for teams in the town and other issues.

The Mayor took on board all the issues and the town council are looking into 'Slow Children Crossing' signs on the London Road by Angela's Meadow, as well as following up the other points.



Shipston High School

These are exciting times for the High School. Following on from its conversion into a new academy in September this year, the school is now part-way through an exciting and breathtakingly ambitious project to redevelop the school. The school has appointed a team of architects from Birmingham who specialise in school design and is currently in positive discussions with the planners at Stratford District Council.

The project has been divided into 5 phases with phase 1 being the construction of a brand new teaching block with six classrooms, new toilet facilities, offices and storage space to accommodate the increased numbers in the school. The school has submitted a fully costed bid to the Department for Education and now awaits its agreement that the £1.5 million cost of phase 1 of the project will be able to start next March. Later phases of the school development include the gradual demolition and replacement of the entire school building with only the 'core' consisting of the school Hall, canteen and kitchen retained.

Headteacher, Jonathan Baker, said, "Phase 2 of the project is particularly exciting as we are looking to build a new four court Sports Hall complete with a dance studio and classroom on school land at the back of the Shipston Leisure Centre so that it can be used by all local schools during the day and by community groups in the evenings and weekends. It would be brilliant to hear the views of potential users of the new sports hall so we can include as

many organisations' requirements as possible in our plans."

The High School is proposing to hold a meeting in the New Year and would like representatives from any local organisations who are interested in attending to get in touch with us via apunt@shipstonhigh.co.uk so that we can notify them when a date has been agreed

The school has been receiving considerable interest about its proposals and is delighted to report that its plans have received fantastic support from a wide range of local interests including the Local Authority, Shipston Town Council and the MP for Stratford-upon-Avon, Mr Nadhim Zahawi, who has been taking a keen personal interest in the school.

Below: an architect's drawing of how the school may look



Shipston Cubs Play Safe

This autumn term the Shipston on Stour Cub Scouts have been working towards their personal safety badges. This involves getting a basic understanding of the dangers that surround the young people in our community. The local police play a major role in informing our young people of the dangers that surround children today, by visiting schools and youth groups in the area.

Two of Shipston's police officers, PCSO Andrew Steventon and PCSO Hayley Ditchburn very kindly paid a visit to the Cubs in the scout hut, to talk to them about many aspects of personal safety, including Childline, Green Cross Code, talking to strangers and internet safety. They did it in a way that actively involved the children and so a fun and informative night was had by all.

This valuable work that our police do helps keep our children safe, but their efforts often go unnoticed. Shipston cubs would like to thank these police officers for their visit and the very important work that they do.

Shipston Music Society November Meeting



John James came to speak about the "French Horn" and its development into the modern version we all recognise. John has considerable standing not only as a principal horn in a variety of orchestras both in Britain and abroad but also as a soloist, composer and arranger for the instrument.

It was explained at the outset that the term "French horn" has been dropped in favour of just "horn" as a French horn was and is still, essentially a hunting horn. We saw a clip of its use in the field by huntsmen and also by a number of players in concert which demonstrated that in its basic form it would be unsuitable in an orchestral setting. The German horn developed along broadly similar lines but the sound proved more agreeable to the ear. John took us through the various – and sometimes bizarre – developments, that gradually added sophistication to the instrument, arriving at what we expect from a modern instrument.

The ancient form of the French hunting horn has in fact been used in orchestral pieces quite recently, to convey the sense of galloping horses.

For further information contact Clare Faulkes on 01608 663207

Shipston Arts and Crafts Society

At the November meeting, Dr Sylvia Pinches came to talk on 'A Tale of Two Castles: Warwick and Kenilworth' revealing their contrasting fortunes throughout the last millennium. This persists today with Kenilworth ruinous and Warwick roofed and displaying historical tableaux.

In 1068, Warwick Castle was built as a motte-and-bailey in part of the existing county town on the orders of William the Conqueror. The surviving Ethelfreda's Mount is the

original motte, in the sixteenth century turned into a garden feature, and the outer walls follow the bailey. Kenilworth Castle is two generations later in its origins; in 1119, Henry III carved out a portion of the royal manor of Stoneleigh and gave Kenilworth to Geoffrey de Clinton, with permission to erect a castle. Geoffrey also founded a monastery, an Augustinian Priory, in his new town of Kenilworth. Kenilworth Castle flourished in the thirteenth centuries at a time when little was done to Warwick. The speaker outlined the various changes made to the castles in the later middle ages.

After the English Civil War, Kenilworth Castle was slighted and made ruinous by its besieger, Colonel Hawke of Parliament's army, although he converted the relatively new gatehouse into a habitable dwelling. In contrast from the late seventeenth century to the late nineteenth, the Greville family at Warwick rebuilt, updated, and extended the accommodation at Warwick Castle.

The next meeting of the society is on Tuesday 15 January 2013 when Margaret-Louise O'Keefe will talk about 'Picasso's Women'. All are welcome.

Guide Dogs National Breeding Centre – Free Tours

The Guide Dogs National Breeding Centre has places available on a number of its tours from Wednesday 3rd January 2013. If you are an individual, small family, social group or company planning an outing / team building get together please do consider booking a tour.

As well as learning about the work carried out at the National Breeding Centre in Bishop's Tachbrook – which supplies all of the guide dog pups throughout the UK – and seeing pups, you can experience the sensory tunnel, and purchase gifts and cards which will help raise money to support the charity's work.

Simply call 0845 3727432

or email nbcvisitors@guidedogs.org.uk

or visit www.guidedogs.org.uk/aboutus/national-breeding-centre/visit-the-nbc/

Shipston Home Nursing



Shipston Home Nursing is a local charity that has been operating for 15 years. SHN looks after terminally ill people in their homes run by a team of qualified nurses specialising in palliative care. We look after the patient and their family for the last 3 months of life.

The service covers Shipston, Wellesbourne, Kineton and the surrounding villages and is completely free of charge, meaning £150,000 has to be raised every year to cover nursing costs.

The charity has a busy January planned, with events ranging from a Zumbathon on the 12th January to a health and complementary therapies day on the 19th. For full details see the What's On calendar on page 7.

Royal British Legion - Shipston Branch

A large crowd flocked to the town centre on Remembrance Sunday 11th November to witness the annual parade from the High Street to St Edmund's and join the Service of Remembrance.



On what was a gloriously bright and sunny day, the Shipston Branch of The Royal British Legion was accompanied by the Town Band, Town and other Councillors, High School Prefects, Young Firefighters, St John's Ambulance and the Scout Group as they processed through the town.

After wreaths were laid at the War Memorial, Rev Jill Tucker led the service in what was a packed-out church. The names of the Shipston fallen were read by the High School prefects followed by two minutes silence at 1100. The sermon was preached by the Venerable Morris Rodham, Coventry Diocesan Archdeacon Missioner, himself having served in the Royal Artillery.

Richard Adams, chairman of the Shipston branch of the Royal British Legion, said "On behalf of our members, I would like to thank St Edmund's Church, the Town Band, all who paraded on the day, the local Police and the Lions for road traffic management and to all who turned out showing their wholehearted support for the Act of Remembrance."

After the service the parade marched back to the High Street, saluting the War Memorial as it was passed and the memory of the town's fallen, and was dismissed.

Stour Valley Visually Impaired Club

The Stour Valley VIP Club held their Christmas Lunch at Newbold Village Hall on Dec 10th. The excellent lunch was provided by Beverley Webb and her team and the beautifully decorated room and tables gave a very festive atmosphere. Thank you Beverley.

The final highlight was the grand raffle to which each member is given a ticket.

The VIP Club would like to thank the shops and businesses in Shipston for their generosity to the club. Many businesses have been struggling in the current financial situation up the UK and the club would like to encourage people to shop locally wherever possible.

Duplicate bridge for improvers

A new weekly session of duplicate bridge will be held on Friday mornings from 10:15 – 12:15, the general format of the sessions will be a 30 minute topic followed by the playing of about 12 – 15 boards.

These sessions will be held at the Catholic Church Hall, Darlingscote Road, Shipston. For further details contact Val on 01608 238754 or 0751 609 1786

Stour Valley Lions

Lions help Newbold Village Hall

On the 30th November, Stour Valley Lions set up and ran another of its fun Horse Race Events at Newbold Village Hall. The funds raised will go towards further refurbishments of the village hall. The event was very well supported by residents and their children. Each race was supported by generous sponsorship from local shops and businesses in the area and there was much laughter and close finishes for the owners, riders and race goers. The entrance fee included fish and chips in the mid evening interval which everyone tucked into.



Senior Citizens Party – Diary date

The 2013 date for the Lions Senior Citizens party is Saturday 16th March. The event is held at Shipston High School where there are access and facilities for the disabled. Transport and wheelchairs are also available for anyone who is unable to get there without assistance.

The party includes welcome drinks professional entertainment, music from Shipston town band, afternoon tea and cakes. If you would like to attend but have not previously had an invite or you have recently moved into the area, please pass your name and address to any Lion member. The party starts at 2.00pm and this year the theme is 'a party for the young at heart'.

Lions January Film

The blockbuster film for January is 'Anna Kerenina' starring Keira Knightly and Jude Law.

The film will be shown at Shipston High School on Friday 11th January at 7pm.

Probus

The speaker arranged for 9th November cried off at the last moment. He was a retired Chief Constable and Bill Hannis had been invited as a guest because they had both served in the same Police Force although had never actually met.



Bill came to our rescue and in his usual humorous style entertained us with stories about Warwickshire murders during his time as a detective. Murders were not always easily solved in the days before DNA and computers but sometimes intuition and luck played a part.

On 23rd November our speaker was Gerald Buck who has spoken about Tristan de Cuna, with excellent slides. 200 miles away in the South Atlantic lies a small unoccupied island called Gough Island. It measures only 7x3 miles and in 1955 an expedition was organised to carry out its first proper survey.

From the photographs he took from a boat on a fortunately calm day the island appeared to be very forbidding with high rocks and only one possible landing place. It is now a World Heritage Site and a substantial manned weather station has been constructed.

District Council update

It is a great honour to be elected to serve as the first Labour District Councillor for Shipston. I look forward to a fruitful working relationship with the Town Council, community groups and residents. I would like to thank the other candidates and everyone who engaged in the democratic process.



My top priority is to explore avenues to bring more jobs and better services to Shipston. That is why I support the supermarket application which, in my opinion, would boost trade, jobs and investment in the town. I welcome the decision to hold the Planning Committee at Shipston High School on 24 January at 6pm (to be confirmed).

Another planning issue is the appeal against refusal of an application to build 22 homes near Hornsby Close. Regrettably, a private meeting of the district council's regulatory committee has resulted in SDC deciding to drop its defence to this appeal. I have objected to the procedure followed by SDC and am supporting residents at the hearing. This development will not, in my opinion, bring economic benefits and should be rejected on landscape grounds.

I am deeply concerned about the impact of the Government's new "bedroom tax" on working people who receive housing benefit and are deemed to be under-occupying social housing. A person paying £100pw rent will lose either £15 or £26pw. 85 households in Shipston will be affected with no prospect of alternative housing if they fall behind with housing costs.

I wish you all a Happy New Year.

Councillor Jeff Kenner

t: 07790 725415

e: jeff.kenner@stratford-dc.gov.uk

Richard Cheney and Jeff Kenner take it in turns to provide the content for this column.

County Council update

Fostering

Every now and again, there is a timely reminder that not all children are able to



Warwickshire
County Council

live with their natural parents. The County Council has a responsibility for many of these and we provide for most of them by fostering. County wide, there are 539 foster carers in 308 households, but a relatively small number are based in south Warwickshire. A local need still exists and practice manager Dawn Jeffs has put out an appeal to staff and members of the Council to help recruit more Foster Carers.

Many of the children will have faced difficult circumstances and deserve a fresh start with a supportive family.

City Deal

Warwickshire councils have been invited to join in a bid to Government for funding for a Coventry and Warwickshire City Deal. The aim, promoted by our Local Enterprise Partnership is to promote a stronger base for engineering in the area.

The County Council has given a cautious welcome to this initiative. If it truly supports our local economy, it will be a good scheme. If it promotes a Coventry centric solution, then we shall need to stand back, but still work to develop local people with the right skills to work in a wide range of industries.

Councillor Chris Saint

County Councillor – Shipston-on-Stour Division

t: 01608 662290

e: christophersaint@warwickshire.gov.uk

Shipston Medical Centre

Whooping Cough Vaccinations for Pregnant women

There is currently an outbreak of whooping cough, and nationally the number of young babies catching the disease is rising quickly. Complications arising from the disease can be pneumonia and brain damage.

To help protect their babies, and in line with national guidance, we are encouraging pregnant mothers to have the vaccine during or after their 28th week of pregnancy. The immunity received from the vaccine will be passed to the baby through the placenta. Even if the mother has been vaccinated against whooping cough before they should still have the vaccine again as previous immunity will have waned leaving little or no protection left to pass on to the baby.

For more information visit the NHS Choices website <http://www.nhs.uk>

Flu vaccinations

If you are in an 'at risk' group, and have missed out on your annual flu vaccination then please contact the surgery as we still have supplies of the vaccine. The 'At risk' groups are:

- Over 65 year olds
- People with chronic respiratory disease
- People with chronic heart disease
- People with chronic renal disease
- People with Diabetes
- People who have immunosuppression due to disease or treatment
- People who have suffered from a stroke



Thank you

A big thank you to everyone who supported the Medical Centre's Christmas Fair in December. Your kind generosity helped raise £750 which is spent on services and equipment that is not funded by the NHS. In the last year funds raised have maintained the wheelchairs we are able to loan to patients, provided specialist patient information which would otherwise not be available and purchased a new audiometer, which prevents patients having to travel to Warwick or Banbury to access this service. Thank you very much indeed.

Medical Centre – t: 01608 661845

Your Town Councillors


Fay Ivens, Town Mayor
Proud Campaign chair

t: 01608 662133

e: fayivens@aol.com


Veronica Murphy, Deputy Mayor
Communications group chair

t: 01608 664518

e: veronica.murphy123@btinternet.com


Ian Cooper
Finance group chair

t: 01608 663785

e: ian@piruk.com


Brian Healey

t: 07773 337134

e: brian.healey@hotmail.co.uk


Arthur Ivens

t: 01608 662133

e: fayivens@aol.com


Adrian Jelf

t: 01608 663092

e: adrianjelf@me.com


Roy Munden

t: 01608 661102

e: christinemunden@googlemail.com


Alan Noyce
General Purposes group chair

t: 01608 661754

e: alanhubertnoyce@hotmail.com


Paul Rathkey
Staffing group chair

t: 01608 664141

e: rathersandco@tiscali.co.uk


Philip Vial
Planning group chair

t: 01608 666275

e: ppjvial@googlemail.com


Melanie Trapp

t: 01608 666939

e: melanie.trapp@sky.com


Jackie Warner

t: 07717 391234


Mark Wildish

t: 01608 238256

e: mark.wildish@talktalk.net

Photography of councillors by Richard Sampson, lensmedia.com

Shipston-on-Stour Town Council

New Clark House, West Street, Shipston-on-Stour, CV36 4HD

Georgina Beaumont, Town Clerk

t: 01608 662180 e: clerk@shipstononline.org

Something exciting to share?

If you have a story that's relevant to Shipston residents, please contact the editor, Catherine Martin, on 01865 600262 or email: forum@shipstononline.org

Copy deadline: First Wednesday of every month

– but the sooner you can notify the editor of a potential story the better.

The Shipston Forum is produced monthly by the Town Council to support the community and is distributed to all households. If you don't receive a copy, please contact the Town Clerk. The Forum can also be downloaded from www.shipstononline.org

Copies of the Talking Shipston Forum can be requested via New Clark House.

Large print copies are available to read at the Library, New Clark House and the Medical Centre.

While every effort is made to ensure information is accurate, the Town Council does not accept responsibility for material submitted by readers or third parties and does not endorse any organisation or event publicised. Contributions may be edited to fit available space.

Useful Contacts

Community Links Transport	01789 294491
Shipston Library:	01608 661255
- 24/7 renewal line	01926 499273
Highways customer services	01926 412515
Shipston Volunteer Transport Scheme	01608 663122
Shipston Forum	01865 600262
Shipston Leisure Centre	01608 662354
Shipston Medical Centre	01608 661845
– Out of hours	03001 303040
Shipston Post Office	01608 661465
Shipston Town Council	01608 662180
Shipston Recycling Centre	01608 663560
Stratford District Council	01789 267575
Warwickshire County Council	01926 410410
Local police (non emergency)	101
PC Richard Grove (Beat Manager)	07977 456585
PCSO Hayley Ditchburn	07879 608696
PCSO Andy Steventon	07966 626908
Churches of Shipston:	
Stour Valley Baptist	01608 664876
Our Lady & St Michael	01608 685259
St Edmund's	01295 688193
Methodist Church	01608 661843

Shipston Amateur Dramatic Society
present

The Sleeping Beauty



a pantomime by Norman Robbins

Townsend Hall
Sheep Street, Shipston-on-Stour

Thursday 31st January, Friday 1st February
and Saturday 2nd February
Evening Performances 7.30 pm
Saturday Matinee 2.30 pm

Tickets – Adults £7, Children £5
(Thursday performance all £5)
Available from John Lyne Home Hardware,
High Street, Shipston-on-Stour or on the door